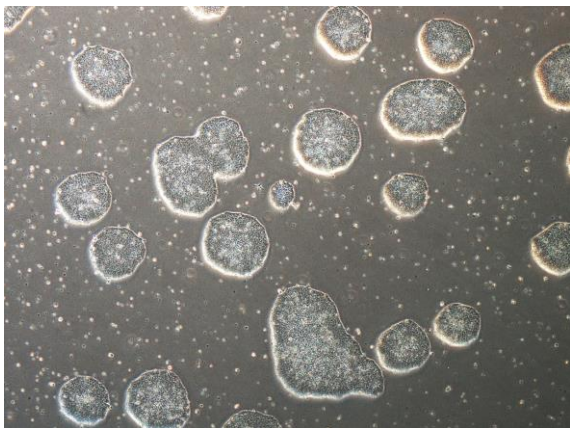
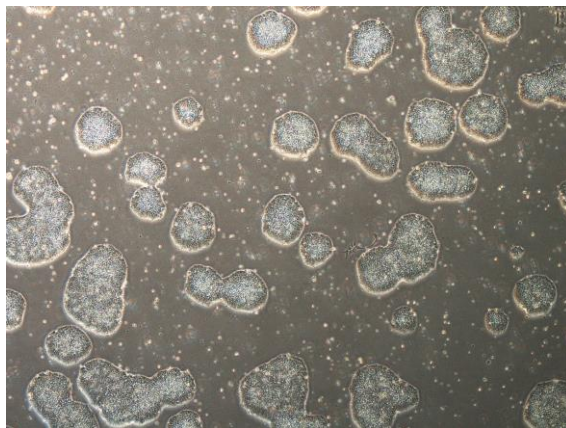


【 CiRA-j-1598 】 Morphology of iPSC colonies

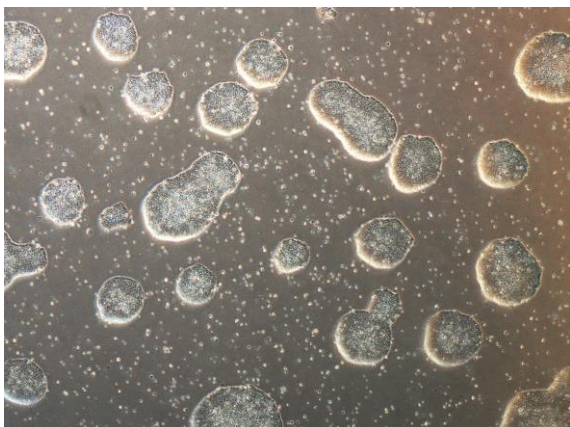
CiRA-j-1598-A: passage-3



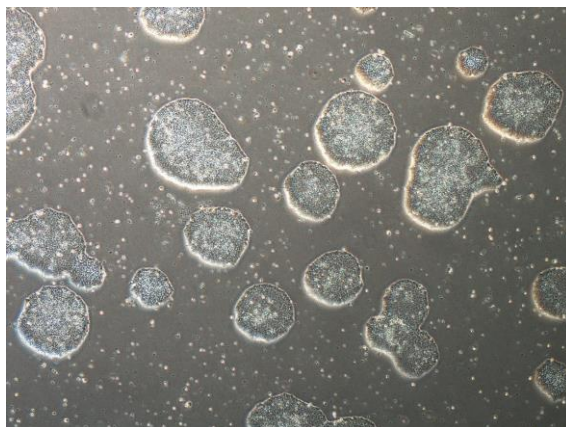
CiRA-j-1598-B: passage-3



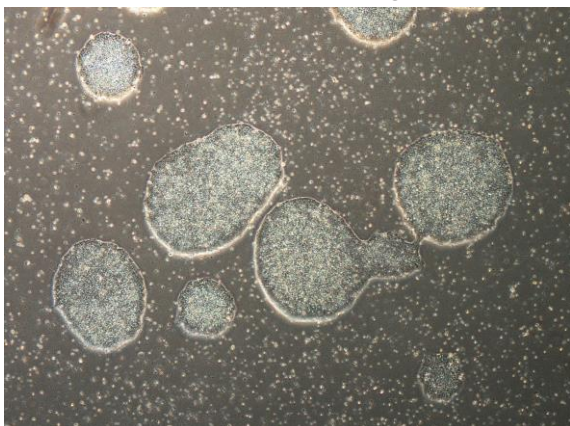
CiRA-j-1598-C: passage-3



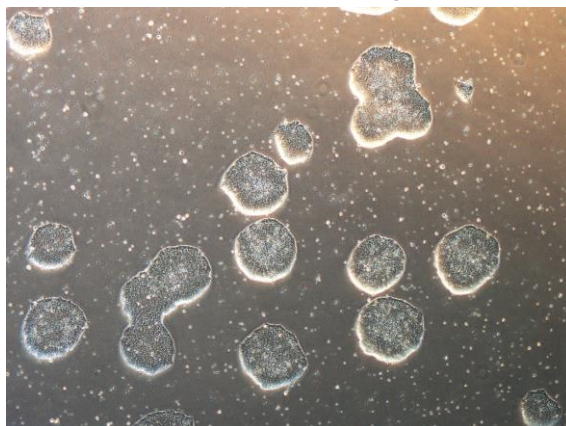
CiRA-j-1598-D: passage-3



CiRA-j-1598-E: passage-3



CiRA-j-1598-F: passage-3



(All images were captured at 4x magnification)